

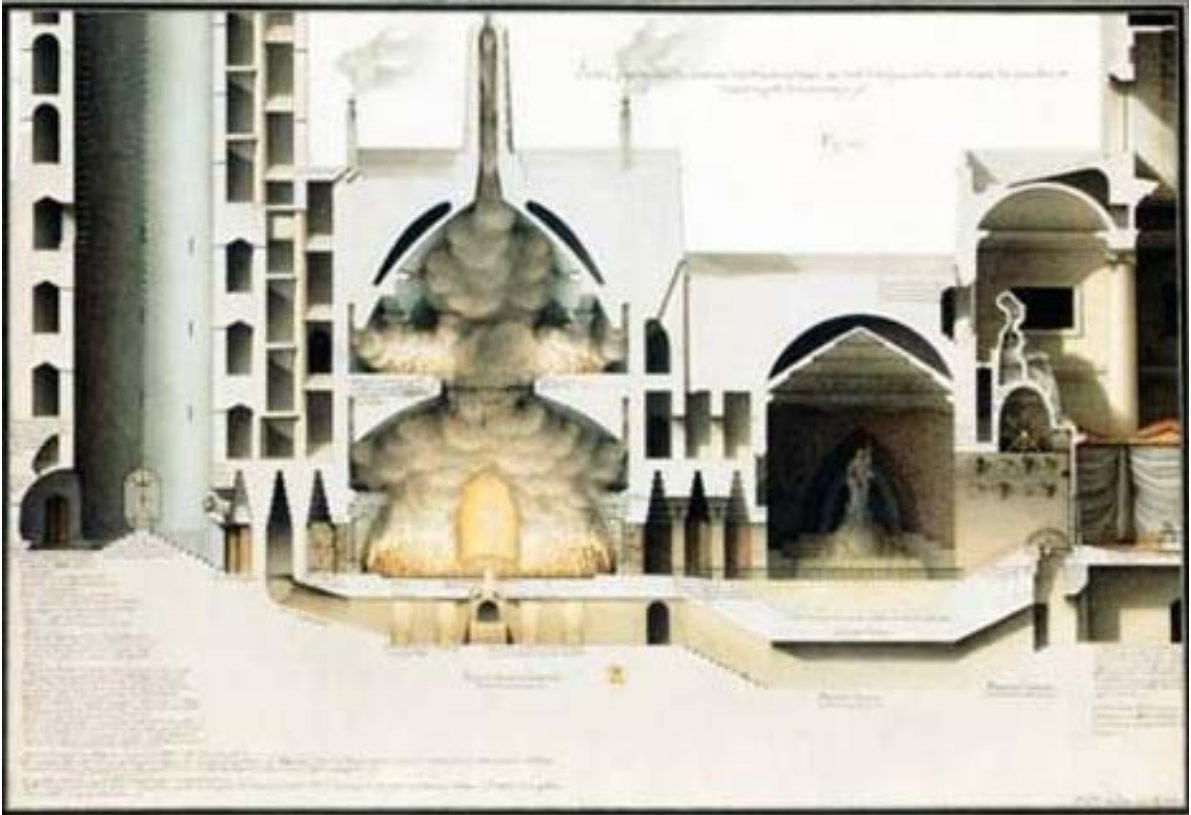
Arch 48-205 Architecture Studio: 2nd Year

Spring 2008 – CMU - M/W/F 1:30-4:30 – Room MM319

Instructor: Jim OToole and Tom Price

February 4, 2008 MID-TERM REVIEW

Project 1: **Fire Tower**/*poetic landmark*



Jean-Jacques Lequeu

Mandatory Mid-Term Review Pin-up requirements

1. Section through building and adjacent site (ground) - 24"x36" show daytime lighting conditions (shade/shadow), materials (texture), and scale figures (firemen, fire trucks, & fire). Section through building should show all major programmatic requirements (burn room, stair, opening, levels, etc.)
2. Rendered site plan (show shade and shadow) - 24"x36" print?
3. Day & Night Perspectives (11"x17")
4. Physical Model